

# REVO ULTRA System 4 and 8 CH 1SATA QUICK START GUIDE

## GETTING STARTED

**Thank you** for choosing REVO AMERICA Video Surveillance Products.

Please open your box, check the packing list and make sure you received everything that is included in the kit.

Please note the following:

- Each system comes with a recorder
- The number of cables should match the number of cameras in your kit. For example, if the kit comes with 4x cameras, then 4x 100ft CAT5e cables will be included.
- Each system comes with a 6ft network and HDMI cable

Please follow the following steps for setup or scan the following QR code for a step by step video

- 01 Run the necessary Ethernet RJ45 cables from the NVR location to the desired camera locations. **No pre-configuration is needed!**
- 02 At the camera installation location, connect the Ethernet Cat5e cable to the camera and mount the camera
- 03 Choose a suitable location for you NVR and connect all accessories



Network cable from NVR to a router



HDMI or VGA cable from NVR to a HD monitor



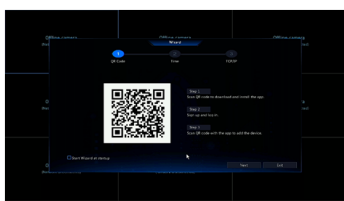
Mouse to the back of the NVR



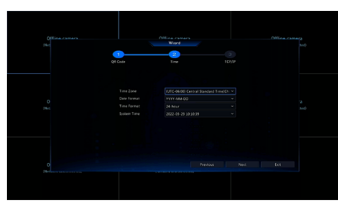
One end of the NVR Power supply to the back of the NVR and the other end (prong) to a wall power outlet

- 04 When the NVR boots up, the default password is "123456", however the default password is intended only for the first login and should be changed to a strong password containing at least nine characters including letters, digits and special character to ensure security.

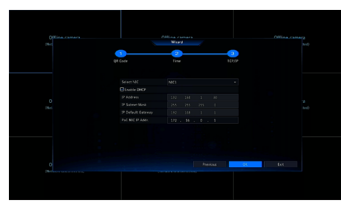
- 05 The setup wizard will guide to complete the most basic setup.



Enable or disable the wizard as needed and then click Next. You may also click



Select the time zone, date and time format, set the system time, and then click Next.



Complete network configuration, and then click Next. By default the NVR is set to DHCP and should already have an IP assigned to it from the router


- 06 Connect the other end of the Ethernet cable into an empty PoE port (Highlighted in red) on the back of the REVO ULTRA NVR.

The camera ports on the back of the Ultra NVR are PoE (Power over Ethernet), aside from carrying the video data, the same cable also provides power to the REVO Ultra PoE camera; no other power adaptors are needed.



In just a few short moments, you should start to see live video from your REVO ULTRA cameras

For any queries, feel free to contact us by any of the following mediums

 (866) 625-7386

 support@revoamerica.com



## GETTING YOUR ULTRA NVR ONLINE

The REVO Ultra NVR comes with the P2P service on by default. All you have to do to see the NVR remotely is go to <http://www.myrevocloud.com> on your PC or download the **REVO ULTRA app** from your smart phone and sign up for an account.

To download the REVO ULTRA App, please scan the following QR code



Creating a myrevoloud.com account and adding you NVR for remote viewing

From your PC:

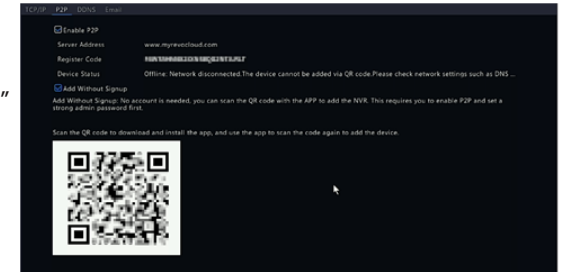
- Open your browser and go to [www.myrevocloud.com](http://www.myrevocloud.com) and click "Sign up" in the upper right-hand corner of the page.
- Enter your desired New User information. Choose and enter your Username, Password, and an Email address to associate with this account. Click the "Acquire" button to the right of the "Email" field.
- A verification notification message will be sent to your email address. Type this verification number into the "Verification Code" field on the [www.myrevocloud.com](http://www.myrevocloud.com) page, and click the "Sign up" button.
- Once your account is created, you will be able to use the "Add Device" button on the page to add your NVR to your account. You will need your NVR's Register Code, located in the NVR's menu in System > Network, under the "P2P" tab.



To view a step by step video on how to create myrevocloud account and add your NVR please scan the following QR Code:

From your mobile APP:

- Open the REVO ULTRA mobile app.
- Tap on "Sign up". Enter an email address, agree to "Service Agreement" and tap "Verify".
- A verification message will be sent to your email address.
- Type the verification number into the "Verification Code" field. Create a password and tap the "Sign up" button.
- In the mobile app, tap the menu icon (upper left corner) and select "Devices"
- Tap "+Add" icon at the top middle of the screen
- Tap "Scan" to use your smart phone camera to scan the QR code located in your NVR GUI under System > Network, under the "P2P" tab.



Tap "Scan" to use your smart phone camera to scan the QR code located in your NVR GUI under System > Network, under the "P2P" tab.

To view your cameras, you may optionally choose a layout by tapping "Images"

- 01 On the live view page click on the circled "+" in the middle of the channel square of your choice.
- 02 On the "Cameras" list that follows, select the Ultra NVR, then the desired camera.
- 03 That's it. You should start video from the selected camera in a few moments.
  - Loading times will vary depending on networks speeds and bandwidth for both mobile and NVR devices.
  - To stop the stream(s), click the double box icon with the "X" in it.
  - You may change stream quality by clicking the "monitor" graphic in the bottom right corner. Available options are: Clear, Balanced and Smooth.

NOTE: If you do not have decent upload & download internet speeds, then you will want to use the "Smooth" stream on your cell phone.

**Warning!** Using higher quality streams use more bandwidth and data. If using higher quality streams, please use with moderation, caution and be sure to close the app completely to avoid extra data charges.

To view a step by step video on how to create an account using the "REVO ULTRA" App and add your NVR please scan the following QR Code:



For detailed set up, please scan the following QR code, to download the manual



Scan here to **register your product** to validate your **warranty**.

